

mySensors™



mySensors Wireless Sensors and Cellular Gateway Quick Start Guide

Information to Users

The mySensors wireless products referenced in this Quick Start Guide have been tested to comply with standards for FCC, IC and CE certification. For certification information on individual products please view product data sheets or product specifications on smart-telematik support site or contact support@smart-telematik.se.

WARNING: Changes or modifications not expressly approved by smart-telematik could void the user's authority to operate the equipment.

Inside the Box

You should find the following items in the box:

- mySensor™ Wireless Sensors
- mySensor™ Wireless Cellular Gateway
- Power Supply
- Antenna
- 6 ft. Ethernet Cable
- Mounting Hardware
- Quick Start Guide
- Batteries

mySensors™ Ethernet Gateway Quick Start

- Create a mySensors user account with assigned wireless gateways and sensors.
- Plug the power supply into a power outlet then connect to the gateway.
- Once all three lights turn green, your network is ready to bring sensors online.

IMPORTANT!

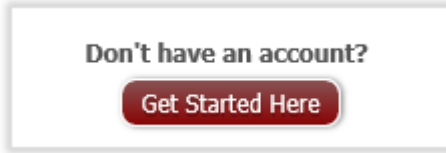
Do not plug your Cellular Gateway in until after you have created an account on www.mySensors.se and added your cellular gateway and wireless sensors to the account.

1. Creating an Account on mySensors™ Online Wireless Sensor System

- New Users / Create an Account

If this is your first time using the mySensors online system site, you will need to create a new account. If you have already created an account you can skip to the “Logging into the Online System” section. The following instructions will guide you through the account creation process.

1. In a web browser, navigate to <http://www.mysensors.se/>.
2. Click the “Get Started Here” button.



3. Complete all fields in Account Information section.

Key Fields:

- Time Zone- All data is recorded using Universal Coordinated Time (UTC) also known as Greenwich Mean Time (GMT). Selecting the time zone will translate the time stamps in the system to display in your chosen time zone. This can be updated later if needed.

4. Complete all fields for Primary Contact Information.

Key Fields:

- Cell Phone and Cell Carrier(mySensors) are optional unless you would like to receive SMS Notifications.

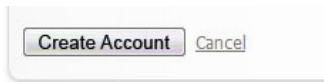
5. Create a new network to hold your gateway and sensors.

Key Fields:

- Network Name - Enter a name for your first network.
- Gateway ID - Numerical serial number located on the bottom of your gateway.
- Gateway Code - 6 digit code on back of sensor, below the serial number.

Note: Additional gateways and sensors can be added to your account in later steps.

6. Once all information has been entered, click the “Create Account” button.



Note: We recommend writing down your username and password to keep in a secure location.

- Login to mySensors™ Online System

Enter your username and password in the login fields and click the “Login” button.

A login form with a light grey background and a dark grey border. The title "Login Information" is at the top. Below it are two input fields: "User name" and "Password". The "User name" field has a yellow border, and the "Password" field has a white border.

2. Adding Networks, Gateways and Sensors

These steps will allow you to configure additional networks and gateways and sensors to your account. If you have additional gateways you can either set them up as their own networks or add them to your existing network.

1. Creating a New Network.

- Choose “Manage” from the main navigation.
- Press the button “Create Network”.
- Enter a name for the new network.
- Enter the Gateway ID and Security Code from the gateway you want to add.
- Press the “Create Network” button.



2. Adding Gateways.

- Choose “Manage” from the main navigation.
- Select the network you would like to add the gateway to.
- Press the button “Network Settings”.
- Enter the Gateway ID and Security Code from the gateway you want to add.
- Press the “Assign Gateway” button.

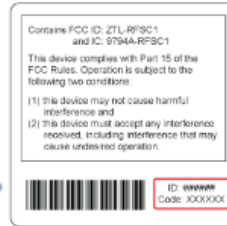


Assign Gateway

Please enter your Gateway ID and Checkcode.

Gateway ID 

Gateway Code 



Gateway Back Label



3. Adding Sensors.

- Choose “Manage” from the main navigation.
- Select the network you would like to add the sensor to.
- Find the bottom of the section “Add Sensor”.
- Enter the Sensor ID and Security Code from the sensor you want to add.
- Press the “Assign Sensor” button.
- Repeat this process to add more sensors to this network.



Assign Sensor

Please enter your Sensor ID and Checkcode.

Sensor ID 

Sensor Code 

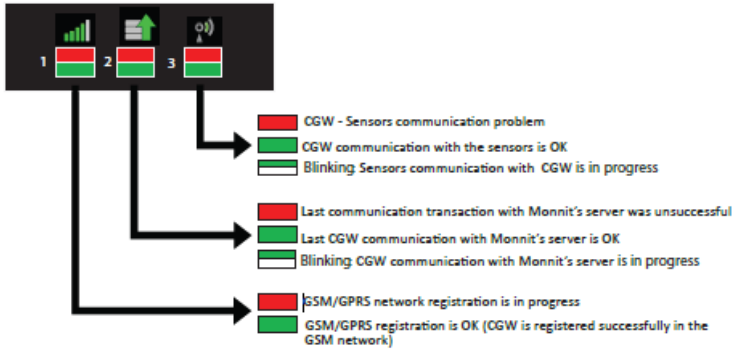


Sensor Back Label



3. Using the mySensors™ Cellular Gateway

- Understanding the Cellular Gateway Lights

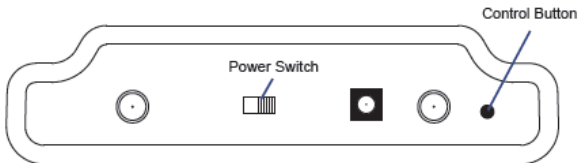


Note 1: The CGW resets itself after receiving new configuration from the server (ex. new HB),

LED1 starts with RED and the reset cycle continues till all 3 LEDs are GREEN

Note 2: After successful SW upgrade, LED 2 and 3 flash RED then reset cycle starts.

- Ethernet Gateway Controls



Using the Control Button:

1) Pressing the power button will turn the device on or off. Powering on the device will trigger the gateway to immediately send all stored sensor messages to the online system and download any pending system messages to deliver to the sensors. (The default heartbeat for the cellular gateway is 5 minutes.)

2) Press and hold to Factory Reset Button to reset the gateway to factory settings. This resets the gateway heartbeat to 5 minutes. You will need to login to the online system after resetting the gateway to reconfigure the gateway to your desired settings.

Note: If your gateway powers up and the lights do not turn green, you may have a connectivity issue. Wait a few minutes to see if the lights will turn green. If they do not, power off the device by pressing the power button, then turn the device back on. If it still does not connect, try resetting the device to the factory settings. If this still does not fix the issue, call smart-telematik customer support.

- Configuring The Cellular Gateway

The Cellular Gateway collects data from all sensors within range and is preconfigured to batch deliver the sensor messages to the online system at the specified heartbeat (every 5 minutes by default factory settings).

You can access gateway settings by clicking on “View Gateways” in the top bar of the “Overview” page. Clicking on a gateway in the list, opens the detail view. Click on the “Edit” tab to access the gateway’s settings.

The screenshot shows a web interface for configuring a Cellular Gateway. At the top, there are five tabs: History, Notifications, Export, Edit (which is highlighted in red), and Sensor List. Below the tabs is a form with the following fields:

- Name:** A text input field containing "iMetrik Cell OpenSIM - 9119".
- Heartbeat Minutes (default: 60):** A text input field containing "10".
- Force Transmit on Aware:** A checkbox that is checked.
- Reform Network:** A text link labeled "Reform".
- Reset Gateway to Factory Defaults:** A text link labeled "Reset".

At the bottom right of the form, there are two buttons: a red "Save" button and a grey "Cancel" button.

4. Bringing mySensor Lite™ Wireless Sensors Online

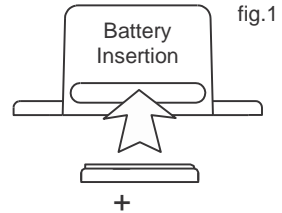
- Insert Batteries Into Wireless Sensors

Important: Make sure your sensors are at least 3ft. away from Ethernet Gateway.

Peel back the black sticker cover of the battery slot and slide the coin cell battery into the sensor as shown in fig.1. It will power on within 10-20 seconds. Once online, your sensor is ready to be deployed. If you wish to change a sensor configuration, change the parameter in the software. The new parameters will be transmitted to the sensor on the next heartbeat. If you need a more immediate response from the sensor, power cycle the sensor by removing, then re-inserting the battery.

Notes:

- If the sensor status indicator does not change, reset the sensor by removing the battery.
- Wait 60 seconds then re-insert the battery.
- When inserting the battery, make sure to push the battery all the way back using a paper clip.
- Note the proper orientation of battery in fig.1



Warning: Your sensors ship with a 10 minute heartbeat. It is recommended that unless you are using the AA battery solution, you should set the heartbeat to no faster than one hour to preserve battery life. When changing a sensor's heartbeat, the new configuration information will be sent to the sensor on it's next heartbeat. If you want to update the sensors immediately you can reset them manually.

Manual Sensor Reset Process:

- 1 - Using the end of a paper clip, push the batteries out of the sensors through the small hole in the top of the sensor
- 2 - Change the sensor heartbeat through the online system
- 3 - Re-insert the batteries into the sensors

5. Using mySensors™ Online Wireless Sensor System

- TheOnline Interface

When you have logged into the online system this is the default view.

1. Menu System
2. Sensor Network “At a Glance”

4. Sensor List

1. Menu System

- Network Overview* - Click to return to “Home” view.
- My Account* - Click to display and edit account information.
- Notifications* - Click setup notifications.
- Manage* - Click to networks/gateways and sensors.

2. Sensor Network “At a Glance”

Displays the most current readings for every sensor in the selected network and last time they checked in.

3. Sensor List

Displays all sensors that are assigned to your sensor network their status currently. Clicking on the sensor names allows you to view information for that specific sensor. Clicking the edit button by a sensor’s name allows you to change the sensor specific settings such as sensor name and heartbeat (report interval).



Note: All information stored on the sensor will be downloaded to the sensor on the next sensor heartbeat (Check-in). If you make a change to any setting, you will need to wait until the sensor has downloaded the new information before you can edit the configuration settings again.

Sensor status and Icon

- Sensor is checking in and within user defined safe parameters.
- Sensor has met or exceeded a user defined threshold or triggered event.
- Sensor has not checked in (inactivity alert sent).
- No sensor readings since shipping
- No sensor readings will be recorded (Inactive)
- Not Used
- Not Used

4. Sensor Health Indicators and Icons.

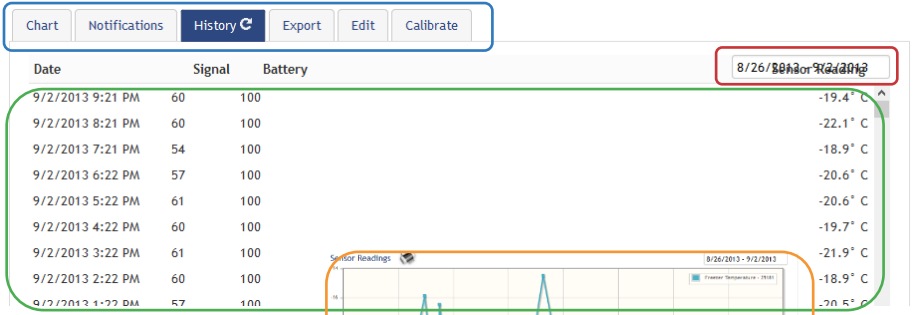
Displays the health of the sensors

-  Signal health for the sensor.
-  Health of battery.

When you click on a sensor name in the "Sensor List" the right panel will change to this view.

5. Sensor Menu Tabs

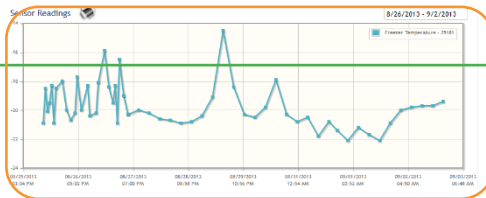
8. Date Range Selector



The screenshot shows a menu bar with tabs: Chart, Notifications, History (highlighted in blue), Export, Edit, and Calibrate. Below the menu is a table with columns: Date, Signal, Battery, and Sensor Reading. The table contains 10 rows of data. A date range selector is visible in the top right corner of the table area, showing '8/26/2013 - 9/2/2013'.

Date	Signal	Battery	Sensor Reading
9/2/2013 9:21 PM	60	100	-19.4° C
9/2/2013 8:21 PM	60	100	-22.1° C
9/2/2013 7:21 PM	54	100	-18.9° C
9/2/2013 6:22 PM	57	100	-20.6° C
9/2/2013 5:22 PM	61	100	-20.6° C
9/2/2013 4:22 PM	60	100	-19.7° C
9/2/2013 3:22 PM	61	100	-21.9° C
9/2/2013 2:22 PM	60	100	-18.9° C
9/2/2013 1:22 PM	57	100	-20.5° C

6. Sensor Data Window



7. Sensor Charts

5. Sensor Menu Tabs

Select a tab to change between:

- History* - Displays a history of the selected sensor's data.
- Notifications* - Allows you to view, add, edit or delete notifications for the sensor.
- Chart* - Displays a graphical view of the selected sensor's data.
- Export* - Allows you to archive data by exporting as a .csv file.
- Edit* - Allows you to archive data by exporting as a .csv file.
heartbeat.

The tab highlighted in blue is your current selection.

6. Sensor Data Window (History)

Displays the history of the selected sensor, including: timestamp, signal strength, battery power and last sensor reading.

7. Sensor Charts

Displays visual charts / graphs for the selected sensor(s) during a specific time period. Charts and graphs can be printed from this view.

8. Date Range Selector

Allows you to choose the date range for viewable information such as sensor history, notifications sent, charts and sensor data export.

- Configuring Sensors

From the Sensor Menu Tabs click on the “Edit” tab to access this area.

Temperature Sensor Configuration

Sensor Name	Freezer Temperature - 25181	?
Display as	CELSIUS	?
Heartbeat Interval	60 minutes	?
Sensor is on	ALL DAY	?
Aware State ?		
Aware State Heartbeat	10 minutes	?
Assessments per Heartbeat	25 Assessment frequency about 2.4 minutes.	?
Use Aware State	Below: -25 ° or Above: -10 °	?
Aware State Buffer	0.6 °	?
Synchronize	OFF	?
Failed transmissions before link mode	2	?

Save

The sensor configuration window allows you to set the primary configurations for each sensor. Within this window you can change the name of the sensor, set the heartbeat (how often the sensor checks-in with the software - default is every 10 minutes), and change the unit of measurement. When you have finished making changes, press the “Save” button at the bottom of this section.

Note: Be sure to click the “Save” button anytime you make a change to any of the sensor parameters. *All changes made to the sensor settings will be downloaded to the sensor on the next sensor heartbeat (check-in). Once a change has been made and “Saved,” you will not be able to edit that sensor’s configurations again until the sensor has downloaded the new setting.*

- Setting Up Notifications

Automated notifications can be set up to alert you via SMS text or email if a wireless sensor meets a set threshold or condition. To create a new notification or edit/delete an existing notification, click on the “Notifications” tab on the Sensor Menu Tabs. The same thing can be found on the main menu and “Notifications”

Recently Sent Notifications 8/26/2013 - 9/2/2013

Date Sent	Sent To	Reading
-----------	---------	---------

Current Notification Settings

Notifications	Status	Text	
Freezer Temperature - 25181	Active	Freezer to hot	Send Test New Edit

View Notification Create a New Notification Edit an Existing Notification

2. Creating a New Notification



Title

Allows you to name your notification.

Class of Notification

There are four notification options available when creating a new notification.

- **Application** - Application notifications are sensor specific (i.e. water sensor = trigger alert when water present, temp sensor = trigger alert when temp is above 70F, etc.). If creating an application specific notification, you will need to choose what sensor type you are creating the alert for. The system will automatically populate a list of sensor types that are currently being used within the network. The notification you create will be based on the selected sensor type.
- **Inactivity** - Set-up “Inactivity” notifications to alert you when your sensors have stopped communicating with the servers. Failure to set up an “Inactivity” notification will result in no email/SMS txt being sent should your sensors stop communicating with the servers.
- **Low battery** - Allows users to define a battery power percentage level that will trigger an alert from the system, warning them to replace batteries.
- **Advanced Notifications** - Allows the user to set notifications based on more advanced rules, such as comparing past data points with the current one to determine if the notification should be sent.

3. Setting and Editing Notification Settings

People to Notify

Start typing a name into the box and the system will automatically populate the name of a user within your sensor network. If there are already multiple users on the network, a drop down list of names will appear. Select the name of the user for the notification. If the person to be notified does not have an account on the network, you may quick add them by selecting the “Add Recipient” link and entering in their contact information.

Notification Parameters

This area allows the user to set notification parameters such as the name, the notification message and sensor data conditions that will trigger the notification.

Assigned Devices

Allows you to tell the system which sensors will trigger the notification being created. When a notification is sent from the system, it will automatically include the sensor name and data that caused the notification to be sent.

- History and Chart Views

Clicking on the “History” or “Chart” tabs within the Sensor Menu Tabs allows you to view the sensor data history as text or in a graphical chart.



Date	Signal	Battery	Sensor Reading
12/21/2010 4:22 PM	100	90	76.3° F
12/21/2010 4:21 PM	100	90	75° F
12/21/2010 4:14 PM	100	92	73.6° F
12/21/2010 4:09 PM	100	92	74.3° F



Note: To change the date range of the viewable information, click on the date range box at the top right of the sensor data window.

- Exporting Data

Clicking on the “Export” tab within Sensor Menu Tabs allows you to export sensor data to a comma separated value (.csv) file or send the sensor data to an external web source.

Export sensor data to CSV file

Data from this sensor Data from all sensors in network Data from all sensors in account

8/26/2013 - 9/2/2013

Export Data ?

Push incoming data to 3rd party

Configure data push

Only the first 2500 records within the given date range will be exported.

To export sensor data you must first select the date range for the data you want to export. Once the date range is selected, determine whether you want sensor data from the selected sensor only, from all sensors in the network or all sensors assigned to the account. When you are finished, click on “Export Data” at the bottom of this window. The data will be exported to a comma separated value (.csv) file for use in spreadsheet software such as Microsoft Excel®. Depending on your browser settings you may be prompted for a save location. If not, the file will be downloaded to your browser’s default download directory.

Note: Only the first 2,500 records within the selected date range will be exported.

You can alternately send your sensors’ incoming data to a 3rd party by clicking on the “Configure data push” link at the bottom of the window. From this area you can pass data from your wireless sensor network devices to another service in real time. This is done by coding the data into a url query then sending the data via http get request at the time data is received. There is an extensive list of parameters that can be passed, as listed in the viewed window, that allow you to send detailed information about both the data and the sensor.

For additional information or more detailed instructions on how to use your mySensors Wireless Sensors or the mySensors Online System, please visit us on the web at [mysensors support site](http://mysensors.com/support).

Rejoin Telematics AB
Årlestigen 2
703 48 Örebro
Sweden
+46 19 102618
www.rejoin.com

